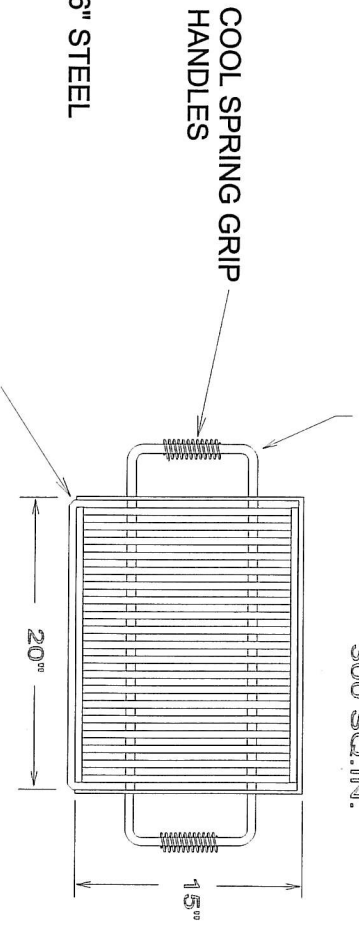
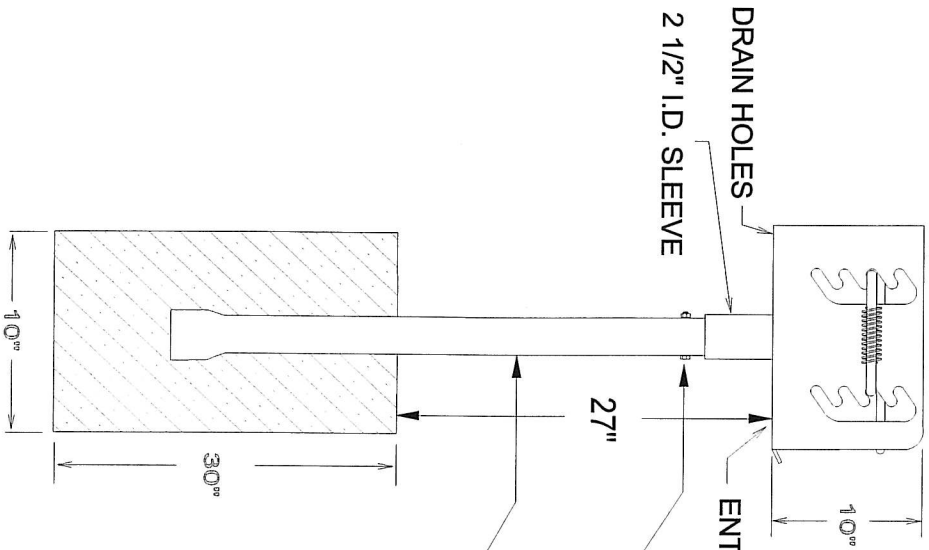


COOKING GRATE HAS 4 LEVELS OF ADJUSTMENT
AND CANNOT BE REMOVED FROM THE GRILL BODY

HANDLES ARE 5/8" ROD

COOKING SURFACE IS
1/2" RODS ON 1" CENTERS
300 SQ. IN.



45 DEG. CHAMFER ON ASH LIP

ANTTHEFT LOCKING BOLT
ALLOWS CONTINUOUS ROTATION

2 3/8" O.D. PEDESTAL, 40" LONG

COOKING GRATE - HEAT RESISTANT BLACK ENAMEL
BODY & PEDESTAL - HOT DIP GALVANIZED

NOTE: THE SIZE OF THE FOOTING
IS ONLY A SUGGESTION
YOUR LOCAL SOIL CONDITIONS
SHOULD DETERMINE WHAT IS
NECESSARY

DRAWN BY		LCB		DATE 1/5/98		SCALE NONE	
		MODEL SB16G		WT. 79 lbs.		KAY PARK	